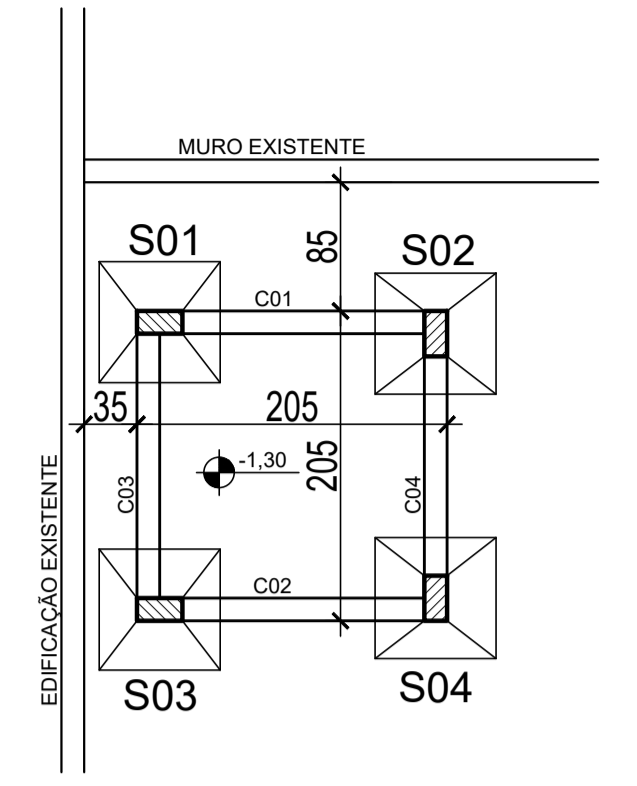
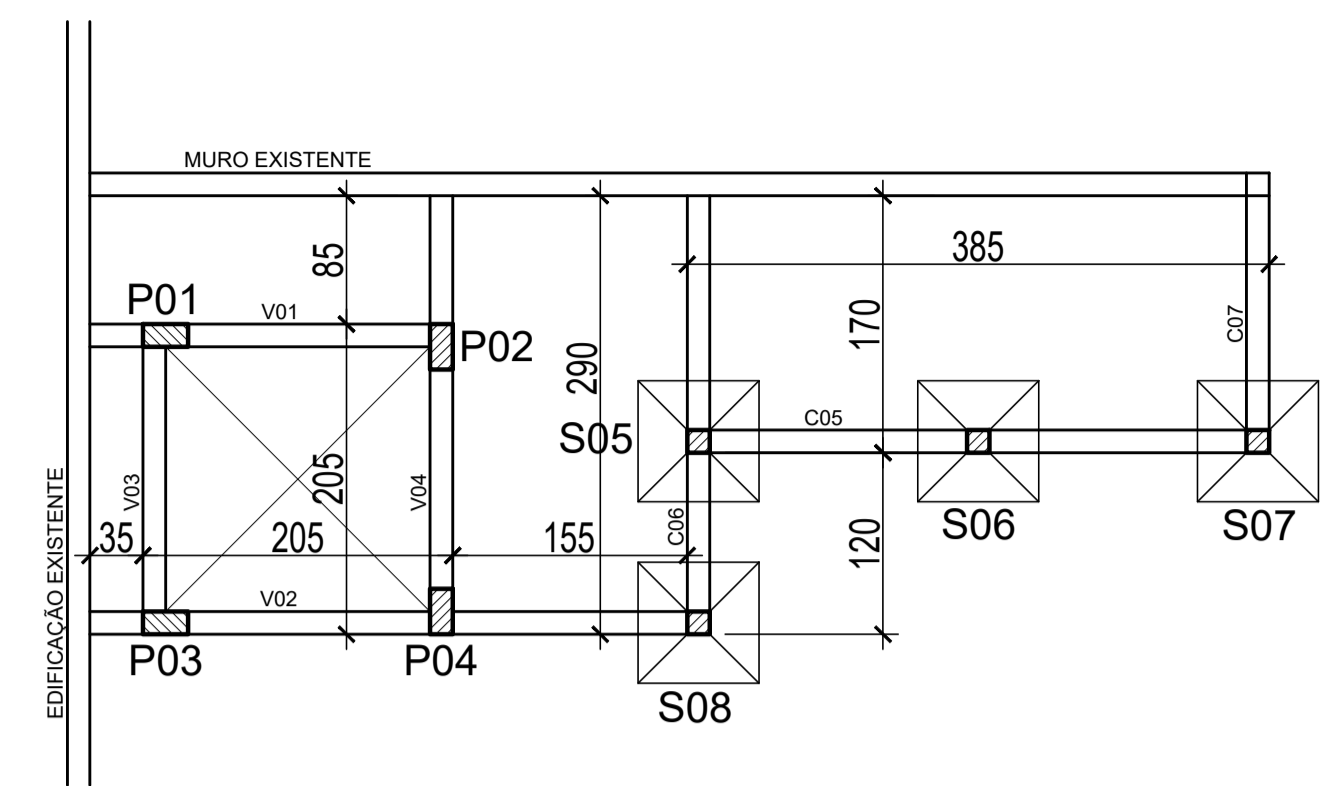


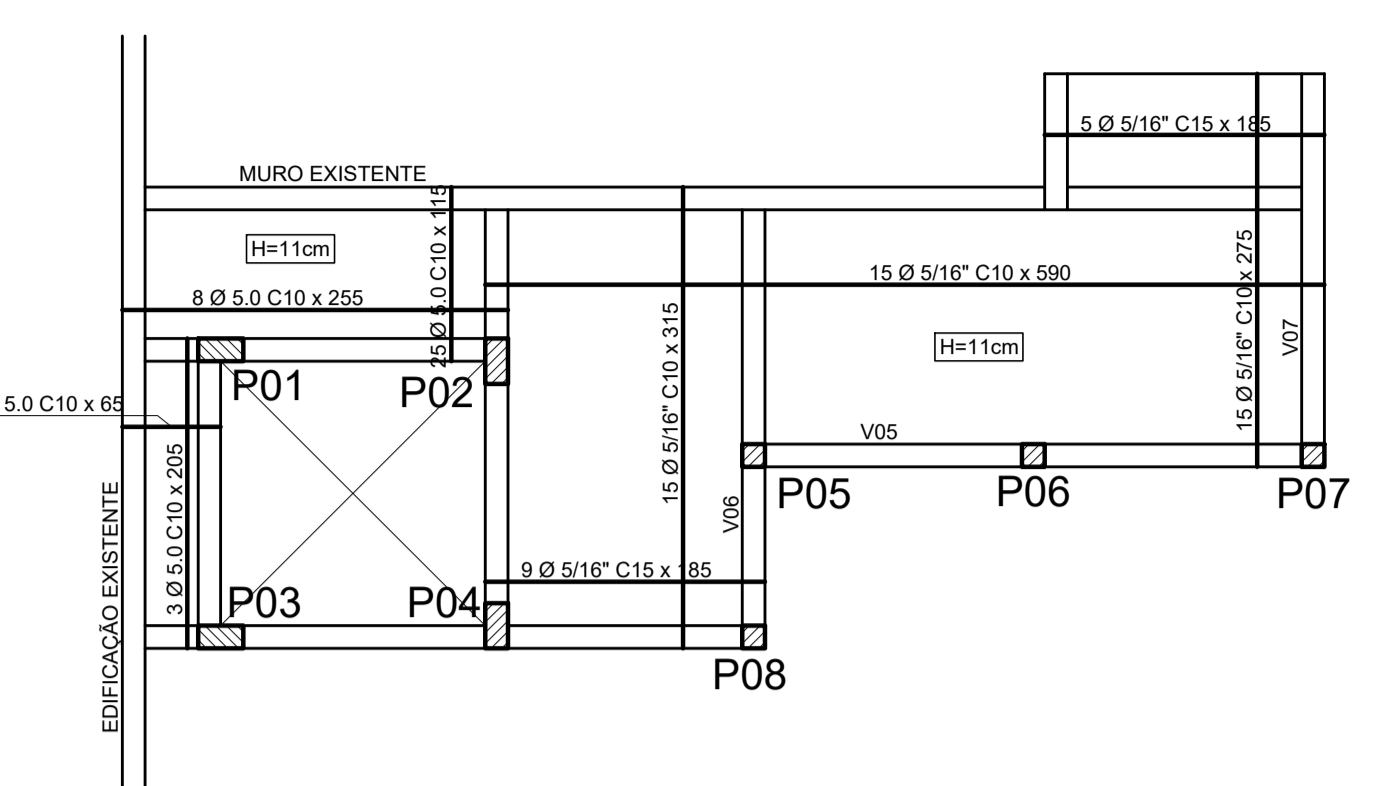
PLANTA DE LOCAÇÃO DOS PILARES  
ESCALA: 1/50



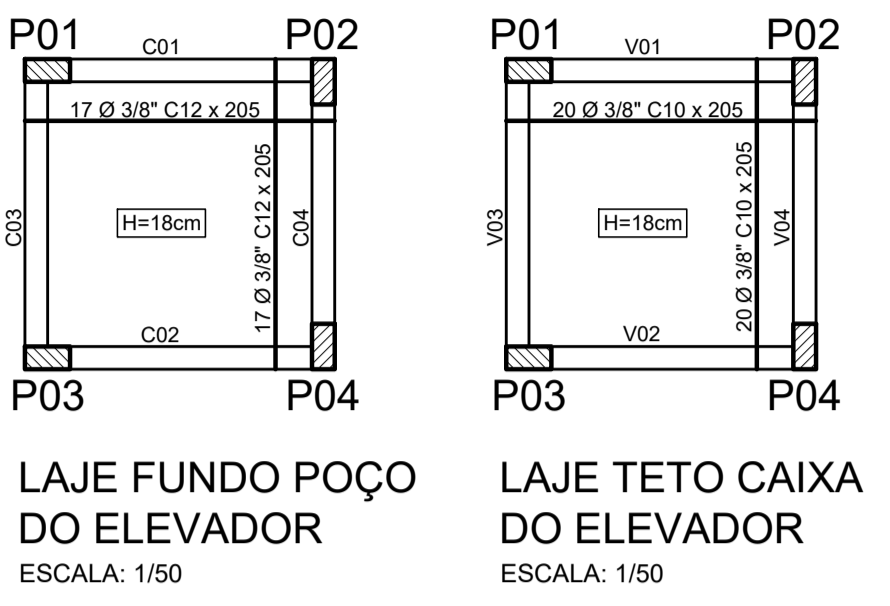
PLANTA DE FORMA SAPATAS E CINTAMENTO - FUNDO DO ELEVADOR  
ESCALA: 1/50



PLANTA DE FORMA NÍVEL 0,00  
ESCALA: 1/50



PLANTA DE FORMA NÍVEL +2,80  
ESCALA: 1/50

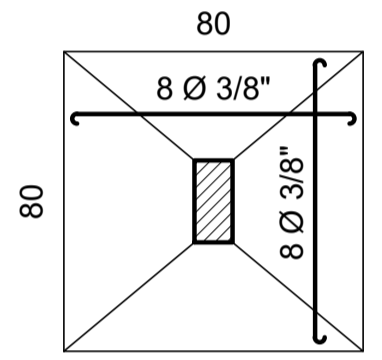


LAJE FUNDO POÇO DO ELEVADOR  
ESCALA: 1/50

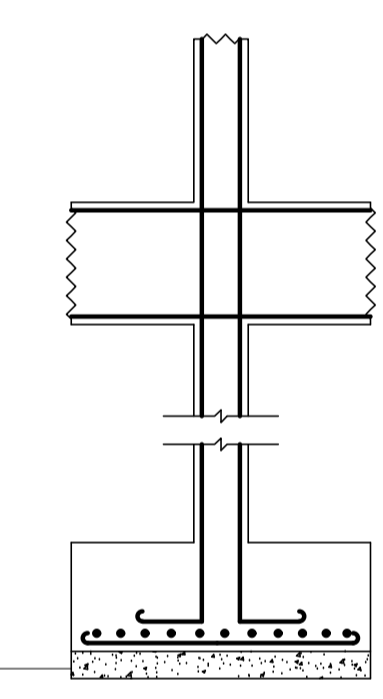
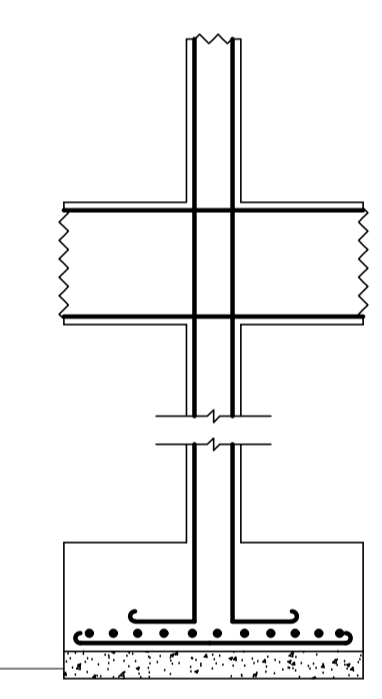
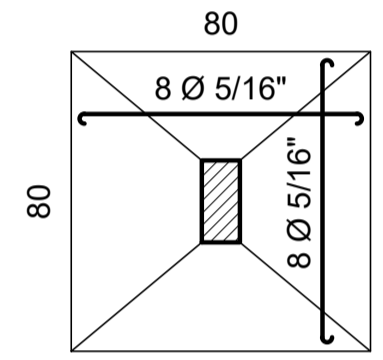
LAJE TETO CAIXA DO ELEVADOR  
ESCALA: 1/50

DETALHE DAS SAPATAS

01 - 02 - 03 - 04

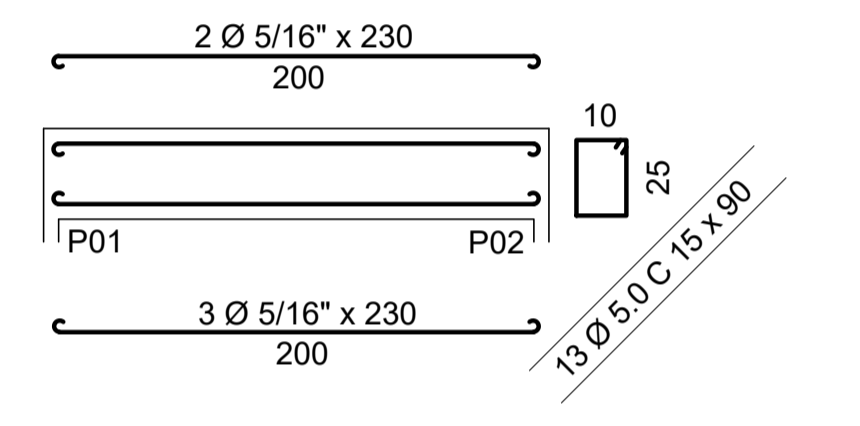


05 - 06 - 07 - 08

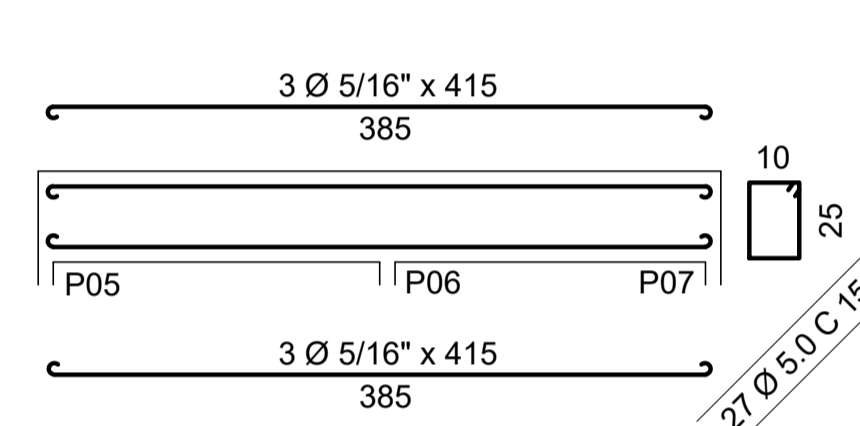


DETALHE DO CINTAMENTO E VIGAMENTO - ELEVADOR E ESCADA

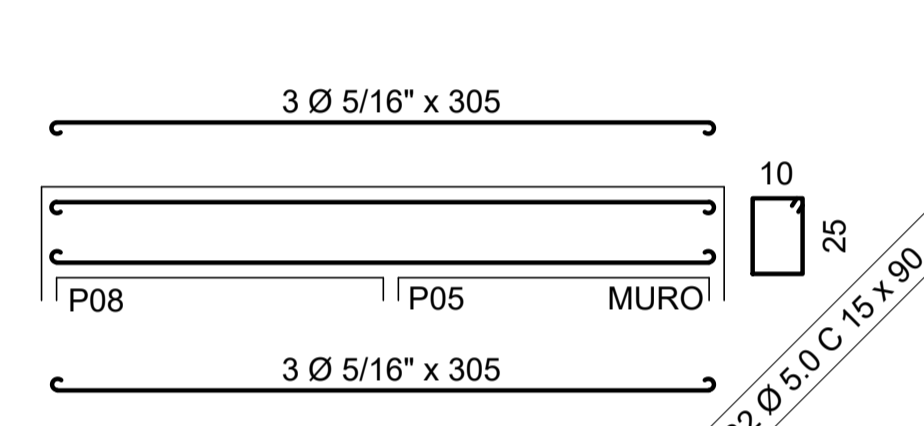
C01 = C02 = C03 = C04 = V03 (15 x 30)



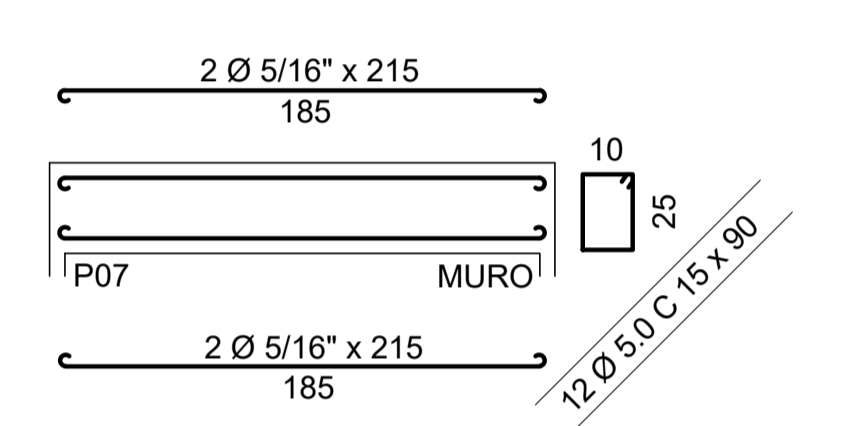
C05 = V05 (15 x 30)



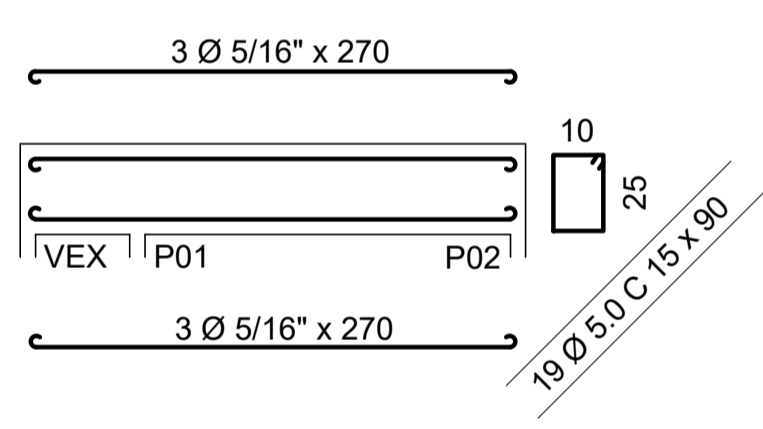
C06 = V06 (15 x 30)



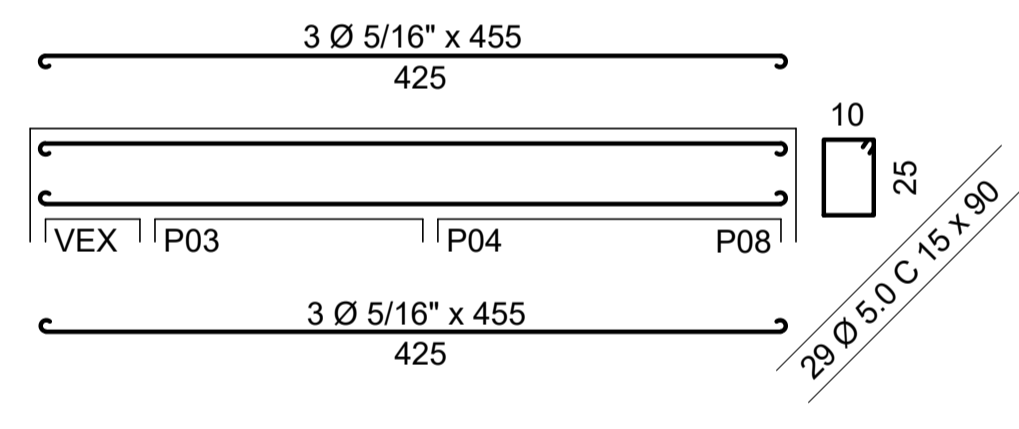
C07 = V07 (15 x 30)



V01 (15 x 30)



V02 (15 x 30)



V04 (15 x 30)

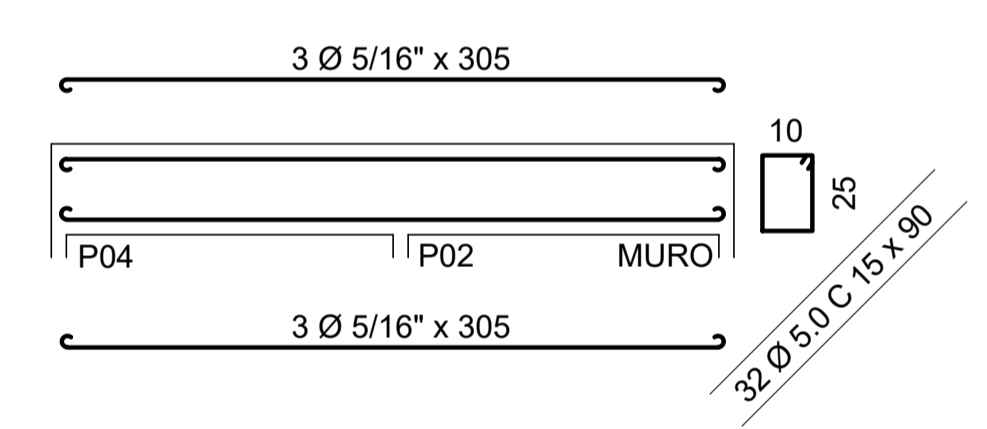
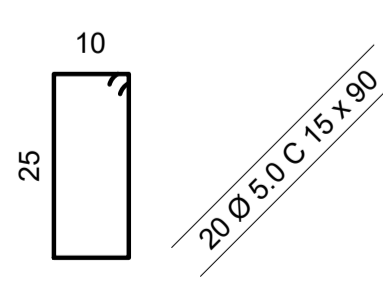
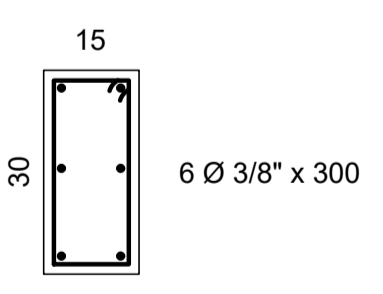


TABELA DE QUANTITATIVO DE MATERIAIS

DESCRIÇÃO DO SERVIÇO	UNIDADE	QUANTIDADE
DESATERRO	m³	11,65
REATERRO	m³	9,15
CONCRETO	m³	10,60
AÇO CA-60 5.0mm	KG	112,73
AÇO CA-50 8.0mm	KG	194,34
AÇO CA-50 10.00mm	KG	422,03
FORMA VIGAS E ESCADA	m²	73,87
FORMA PARA LAJE	m²	12,49

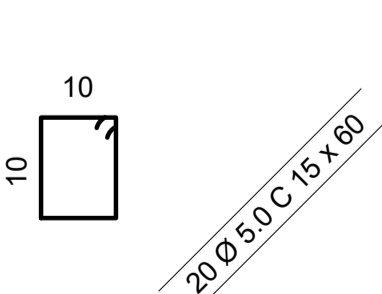
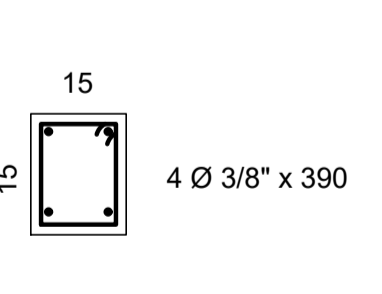
Detalhe dos Pilares Elevador Nível (-1,30 / 0,00)

01 - 02 - 03 - 04



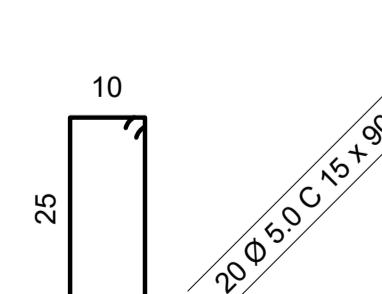
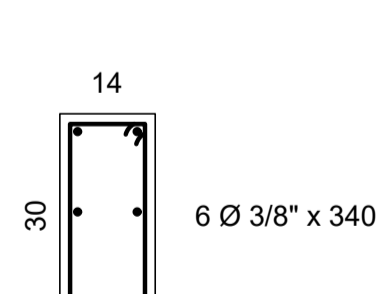
Detalhe dos Pilares Escada até Nível 0,00

05 - 06 - 07 - 08



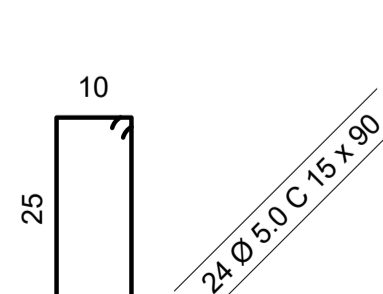
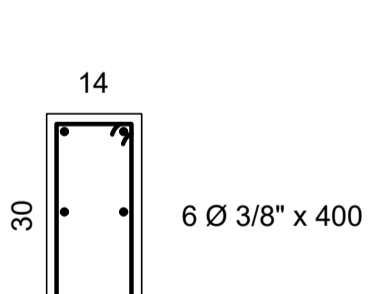
Detalhe dos Pilares Elevador Nível (0,00 / +2,80)

01 - 02 - 03 - 04



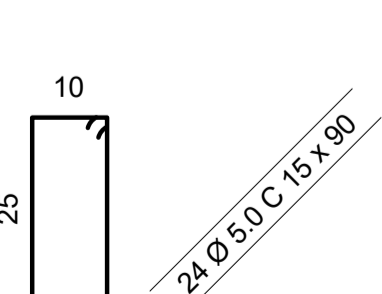
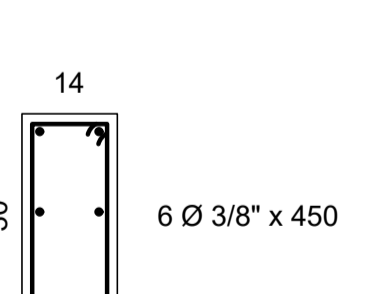
Detalhe dos Pilares Elevador Nível (+2,80 / +6,20)

01 - 02 - 03 - 04



Detalhe dos Pilares Elevador Nível (+6,20 / +10,70)

01 - 02 - 03 - 04



PROJETO ESTRUTURAL

Proprietário: CÂMARA MUNICIPAL DE LUISBURGO-MG  
CNPJ: 01.630.550/0001-57

Resp. Técnico: Daniel Petronilho de Souza - Eng. Civil CREA 201.142/D-MG.

Endereço da obra: Avenida Ayrton Senna nº186, Bairro Boa Esperança em Luisburgo-MG.

Título: Planta de Locação, Plantas de Forma, Detalhe das Lajes, Detalhe das Sapatas, Detalhe dos Pilares, Detalhe do Cintamento, Detalhe do Vigamento

Desenho (AutoCAD): Daniel Petronilho de Souza | Data: Novembro / 2023 | Escalas: Indicadas

**DANIEL PETRONILHO DE SOUZA**  
Engenheiro Civil  
Rua Olímpio Vargas, 13 - 2º andar - Centro - Manhuaçu - MG.  
Contato: (33) 98413-5343 e-mail: danieldpsouza@hotmail.com

Folha: **01/01**